

Code: 8XG1

2.4m (8ft) long container



Instant storage space

Has your business or facility run out of space, are you overstocked, undergoing a refit, or shifting premises?

Do you need to shift stock to point of sale?

Are you running or attending an event you need to move product or equipment to?

A Boxman container is the perfect solution for your short or long term storage.

The benefits:

- Instant, flexible storage options
- Prompt delivery and pick-up
- Cost effective
- Safe, dry and vermin proof
- Lockable and tamper proof
- Durable steel construction



www.boxman.co.nz

About this container

For the client requiring a small volume, highly portable storage unit, this is the ideal Boxman container. At 9.9m³ this container is still capable of being locked into two twist locks on a truck.

Boxman containers

This container has been specifically designed and manufactured according to Boxman Group specifications to meet our customer's high expectations. These models are maintained to a 'Food Grade' quality standard, ensuring the best possible equipment is available at all times.

Container features

New build Boxman containers are built to the highest industry specification. They all feature high strength, corrosion resistant steel and additional vents to prevent condensation. Polyurethane coated floors for easy cleaning and security lock-boxes are standard.

All Boxman containers are CSC plated to allow for coastal and international shipping.



Our customer service team are standing by to assist with your enquiry: Freephone 0800 BOXMAN (269 626)

Code: 8XG1

2.4m (8ft) long container



Container dimensions

External Length	2438mm
External Width	2200mm
External Height	2260mm
Interior Length	2287mm
Interior Width	2112mm
Interior Height	2059mm
Door Width	2106mm
Door Height	1949mm

Cubic Volume	9.9m ³
Gross Weight	6000kg
Tare Weight	950kg
Payload	5050kg

Note: Specifications provided are indicative only as they can differ slightly between manufacturers.

General information

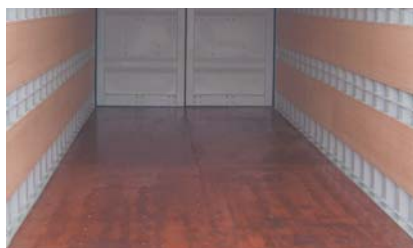
ISO Code	8XG1
Subtype	
Shipping Grade	II CL5
Internal Grade	Food Grade

Boxman's new build container features



1. Lock-box

The security lock-box features a covered tab to which a padlock can be fixed. The solid construction will deter even the most determined of thieves.



2. Varnished floor

Most Boxman containers feature a coated polyurethane floor. This reduces maintenance and cleaning costs.



3. Extra Ventilation

All Boxman new build containers are fitted with a minimum of four vents to reduce the risk of condensation and sweating.



4. Higher handles

All Boxman new build containers feature higher handles. This is a great feature that will save your back, and make it much easier to get the leverage you need to open up your container.



BOXMAN

- Nationwide delivery service
- Flexible self-storage options
- Customer service and support unrivalled in the business
- Nelson Head Office, branches in Auckland, Blenheim, Christchurch and Wellington.



www.boxman.co.nz

Our customer service team are standing by to assist with your enquiry: Freephone 0800 BOXMAN (269 626)